



# **A PROJECT OF THE CANCER INSTITUTE FOUNDATION, INC. FOR THE CANCER INSTITUTE PROGRAM**

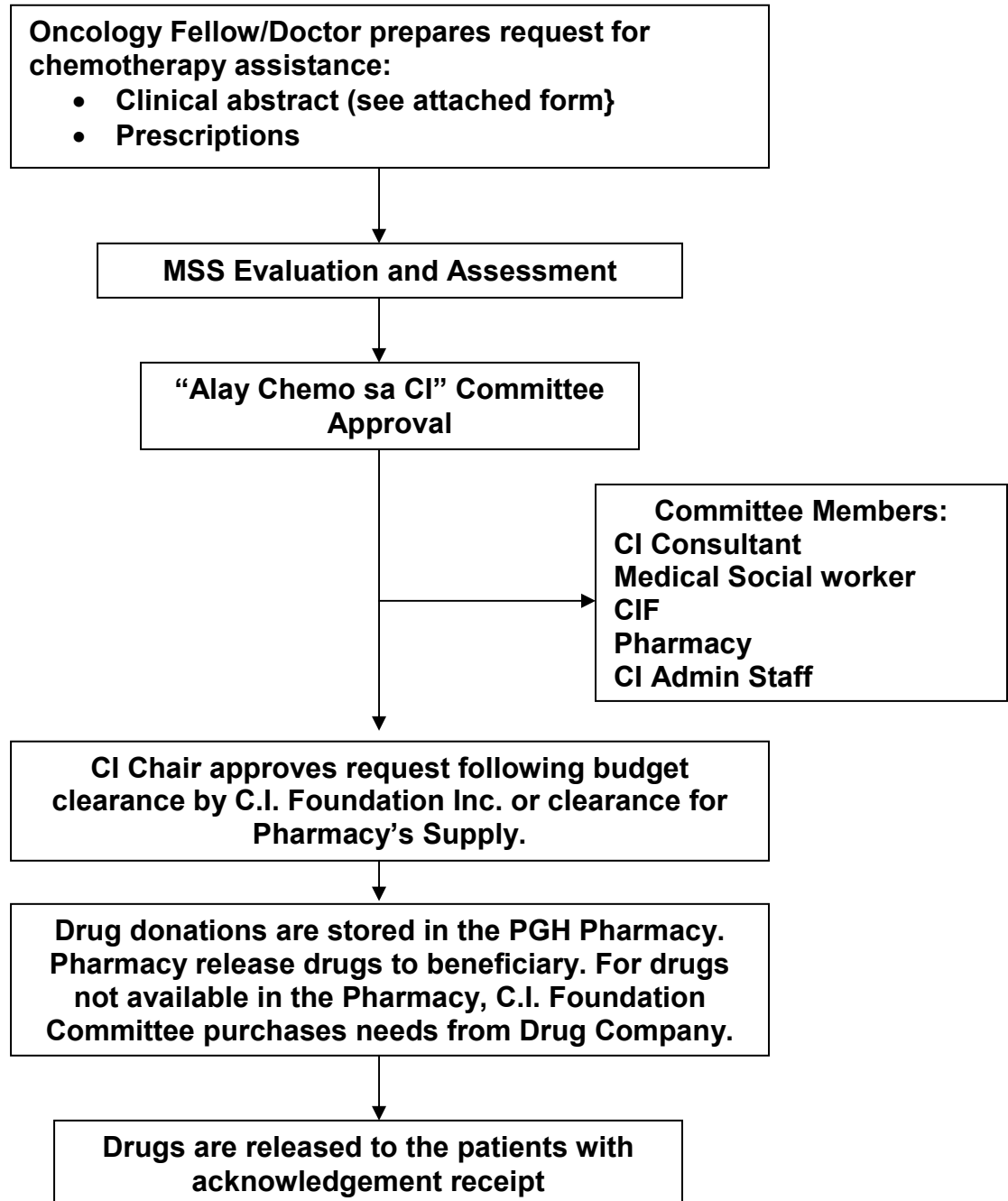
## **“ALAY CHEMO SA CI”**

### **GUIDELINES FOR CHEMOTHERAPY/ SURGICAL/ RADIATION ASSISTANCE**

1. Assistance will only be given to indigent charity patients of the Philippine General Hospital-Cancer Institute (PGH-CI) following Medical Social Service (MSS) evaluation. Only patients assessed as Class A may avail of assistance. The assistance depends on the need and maybe given in full or partial support for chemotherapy/surgical/radiation treatments.
2. The financial support is only for chemotherapy, surgical needs and radiation assistance. They are not for transportation, blood transfusion and others, unless requested by donor.
3. Only patients admitted and seen at the Outpatient Services in the CI can avail of the financial support.
  - For outpatient chemotherapy and other treatments, the chemotherapy must be given at the CI clinics.
  - For surgery, it should be done at any PGH Surgical Unit.
  - For radiation therapy, it can be done outside the PGH provided there is an official receipt for radiation services at the charity price.
4. Due to the limited amount of financial assistance available, the request will be evaluated by the “Alay Chemo sa CI” committee and financial support given by the CI Foundation through the CI Chair, following the recommendation of the MSS. (Please see flowchart.)
  - a. Patients with early stage disease with good prognosis wherein tumor is sensitive to chemotherapy.
  - b. Patients for first line chemotherapy for curative purpose and not for palliative purposes.
  - c. Chemotherapy drugs with well-known curative effects will be prioritized (BFAD approved). Experimental drugs or drugs undergoing Phase II trials shall not be given assistance.
  - d. Financial assistance for patient will have a maximum amount of P15,000.00 (PAGCOR Fund), unless donor commits to support patient’s full treatment, like the “adopt a patient” restricted scheme of (SMART Fund). Exemption to this rule will be made on a case to case basis upon the discretion of the committee and CI Foundation Inc. through the CI Chair, upon approval of the donor.
5. Patients initially assessed by the MSS not to be Class A but whose funds have already been depleted may be given assistance if on re-evaluation by the MSS are found to be really indigent.
6. Patients who have already received financial/chemotherapy/surgical/radiation assistance from other Agencies/NGO’s (like PCSO, Senator’s funds, congressman’s funds) will not be prioritized.

## “ALAY CHEMO SA CI”

# PROCEDURAL FLOWCHART OF CHEMOTHERAPY DRUG DONATION





**“ALAY CHEMO SA CI”  
A Cancer Institute Foundation, Inc. Project  
In collaboration with:**

/ / Ricky Reyes Fund  
/ / Smart Fund  
/ / PAGCOR FUND  
/ / Andres Soriano Fund

---

Date \_\_\_\_\_

The Cancer Institute Foundation Inc.

Dear Sir:

This is to request for chemotherapy assistance of patient \_\_\_\_\_  
With a diagnosis of \_\_\_\_\_  
Stage/Diagnosis \_\_\_\_\_  
Chemotherapy drugs needed \_\_\_\_\_

Enclosed are the prescriptions:

\_\_\_\_\_  
Doctor In-Charge

\_\_\_\_\_  
MSS Approval

Endorsed By:

\_\_\_\_\_  
Salvador R. Villanueva, M.D.  
Alay Chemo sa CI Committee

\_\_\_\_\_  
Cecilia A. Ladines-Llave, M.D.  
CI Chair